



ARM-USB-OCD-H, ARM-USB-OCD-HL, ARM-USB-OCD

OLIMEX OPENOCD ARM JTAG DEBUGGERS

USER'S MANUAL

Document revision F, November 2023



All boards produced by Olimex LTD are ROHS compliant

DISCLAIMER

© 2023 Olimex Ltd. Olimex®, logo and combinations thereof, are registered trademarks of Olimex Ltd. Other product names may be trademarks of others and the rights belong to their respective owners.

The information in this document is provided in connection with Olimex products. No license, express or implied or otherwise, to any intellectual property right is granted by this document or in connection with the sale of Olimex products.

The hardware designs of the devices, subjects of this manual, are proprietary. The design files would not be distributed nor shared with the end customer.

The products described in this manual are intended to work with open source software.

It is possible that the pictures in this manual differ from the latest revision of the board.

The product described in this document is subject to continuous development and improvements. All particulars of the product and its use contained in this document are given by OLIMEX in good faith. However all warranties implied or expressed including but not limited to implied warranties of merchantability or fitness for purpose are excluded. This document is intended only to assist the reader in the use of the product. OLIMEX Ltd. shall not be liable for any loss or damage arising from the use of any information in this document or any error or omission in such information or any incorrect use of the product.

This product is intended for use for engineering development, demonstration, or evaluation purposes only and is not considered by OLIMEX to be a finished end-product fit for general consumer use. Persons handling the product must have electronics training and observe good engineering practice standards. As such, the goods being provided are not intended to be complete in terms of required design-, marketing-, and/or manufacturing-related protective considerations, including product safety and environmental measures typically found in end products that incorporate such semiconductor components or circuit boards.

Olimex currently deals with a variety of customers for products, and therefore our arrangement with the user is not exclusive. Olimex assumes no liability for applications assistance, customer product design, software performance, or infringement of patents or services described herein.

THERE IS NO WARRANTY FOR THE DESIGN MATERIALS AND THE COMPONENTS USED TO CREATE ARM-USB-OCD-H OR ARM-USB-OCD. THEY ARE CONSIDERED SUITABLE ONLY FOR THE RESPECTIVE PRODUCTS.

Table of Contents

DISCLAIMER	2
CHAPTER 1: OVERVIEW	5
1. Introduction to the chapter	5
1.1 Features	5
1.2 Functional description and purpose of the board	6
1.3 What is OpenOCD?	6
1.4 Comparison of Olimex OpenOCD debuggers	7
CHAPTER 2: DEVICE DESCRIPTION	9
2. Introduction to the chapter	9
2.1 Status LED	9
2.2 Ports and connectors	9
2.2.1 USB connector.....	9
2.2.2 JTAG connector.....	10
2.2.3 RS232 connector.....	11
2.2.4 Power out barrel jack.....	11
CHAPTER 3: SETTING UP ARM-USB-OCD	13
3. Introduction to the chapter	13
3.1 Basic system setup	13
3.2 Detailed hardware setup	13
3.2.1 Enabling SWD interface for ARM-USB-OCD.....	14
3.3 Detailed software setup	14
3.3.1 Getting OpenOCD.....	15
3.3.2 Drivers and driver installation.....	16
3.3.3 Driver installation in Windows.....	17
3.3.4 Driver installation in Linux.....	19
3.3.5 Driver installation in MAC OS X.....	19
3.3.6 How to uninstall and clean-up previously installed drivers.....	20
3.4 Basic OpenOCD connection	21
3.4.1 Starting OpenOCD GDB server via FTDI drivers.....	22
3.4.2 Simple target connection via LibUSB drivers.....	22
3.4.3 Simple SWD target connection with ARM-JTAG-SWD.....	23
3.5 Advanced OpenOCD practices	23
3.5.1 Using multiple ARM-USB-OCD interfaces.....	23
3.5.2 Changing the VID and PID of the debugger.....	25
3.6 IAR Embedded Workbench for ARM	25
3.7 Rowley Crossworks for ARM	26
3.8 STM32CubeIDE	28
3.9 CooCox CoIDE (discontinued)	29
3.10 Olimex Open Development Suite (ODS) package (discontinued)	30
3.11 Other software tools	31

CHAPTER 4: FREQUENTLY ASKED QUESTIONS.....32
CHAPTER 5: REVISION HISTORY AND SUPPORT.....33
5. Introduction to the chapter.....33
5.1 Document revision.....33
5.2 Useful web links and purchase codes.....34
5.3 Product support.....35

CHAPTER 1: OVERVIEW

1. Introduction to the chapter

Thank you for choosing this OpenOCD ARM JTAG debugger manufactured by Olimex Ltd. This document provides information about two of the ARM debuggers manufactured by Olimex Ltd – ARM-USB-OCD and ARM-USB-OCD-H.

ARM-USB-OCD and ARM-USB-OCD-H are very similar in features and hardware design. Because of that when one of them is mentioned in this document it is safe to assume that the information applies for both debuggers, unless it is specifically stated otherwise.

1.1 Features

The debuggers have the following features:

- Debug all ARM microcontrollers with JTAG interface supported by OpenOCD
- Use ARM's standard 2×10 pin JTAG connector
- Support ARM targets working in voltage range 2.00V – 5.00V (1.65V – 5.00V for ARM-USB-OCD-H; 0.65-5.5V for ARM-USB-OCD-HL)
- Supported by the open-source community and OpenOCD debugger software
- Automatic powering via the JTAG to your target board with up to 200mA at 5V
- Able to power a target board via a standard DC barrel jack; cable for the external powering included – 2.1×5.5×14mm female connectors at both ends
- Downloadable Windows installer for full featured and open source tools as alternative to the commercial ARM development packages: GCC C compiler, OpenOCD debugger and Eclipse IDE.
- Works with IAR EW for ARM via GDB server; works with Rowley Crossworks IDE; works with STM32CubeIDE
- Supported under Windows, Linux and Mac
- Dimensions (50×40)mm ~ (2×1.6)" + 20 cm ~ (8") JTAG cable – ribbon cable included

ARM-USB-OCD-H has these specific features over the ARM-USB-OCD:

- High speed USB 2.0 with lower latency time, RTCK adaptive JTAG clock up to 30Mhz and higher throughput achieve x3-x5 times faster programming speed than ARM-USB-OCD
- Works with lower voltage targets (down to 1.65V); the ARM-USB-OCD can't debug targets working at voltage levels lower than 2V.

ARM-USB-OCD-HL is a variant of ARM-USB-OCD-H with more expensive voltage translators which allows it to work with lower voltage targets and it has this specific feature over ARM-USB-OCD-H:

- Works works in the 0.65-5.5V range (as opposed to 1.65V-5V for ARM-USB-OCD-H)

ARM-USB-OCD has this specific feature over ARM-USB-OCD-H:

- A jumper that allows you to change the voltage provided to the target. It can power 5V, 9V or 12V targets; ARM-USB-OCD-H can provide only 5V to the target.

1.2 Functional description and purpose of the board

A programmer/debugger is an inseparable part of an active development process that involves ARM microcontrollers. ARM-USB-OCD is a USB FT2232-based ARM JTAG programmer/debugger that is controlled by a PC via OpenOCD under Windows, Linux, or MAC OS. The ARM-USB-OCD programmer/debugger is used for hardware and software development on ARM microcontrollers (MCUs) which via JTAG interface.

Both debuggers are able to power your target board via the JTAG (pin #19).

Both debuggers can power the target board via a DC power plug. The ARM-USB-OCD-H always provides up to 5V of voltage to the target via the plug, while the ARM-USB-OCD can be configured to provide 9V or 12V.

The Olimex OpenOCD debuggers can also be used for other applications (except ARM microcontroller debugging) as long as the software allows it. We have seen Olimex OpenOCD debuggers used for flash memory programming (“flashrom” utility software) and Atmel AVR debugging (“AVReAL” and “AVRdude” software tools). Yet, while these applications of ARM-USB-OCD are possible, we do not provide any support regarding such use.

Please note that Olimex OpenOCD debuggers have NO hardware support for “Serial Wire Debug” interface. An adapter extending the SWD functionality is sold separately. The adapter is called ARM-JTAG-SWD.

1.3 What is OpenOCD?

The Open On-Chip Debugger (OpenOCD) aims to provide debugging, in-system programming and boundary-scan testing for ARM embedded target devices. It is a free and open-source alternative to commercial ARM software.

It does so with the assistance of a debug adapter, which in our case is the ARM-USB-OCD debugger which helps provide the right kind of electrical signaling to the target being debugged. These are required since the debug host (on which OpenOCD runs) won't usually have native support for such signaling, or the connector needed to hook up to the target.

OpenOCD was created by Dominic Rath as part of a 2005 diploma thesis written at the University of Applied Sciences Augsburg. Since that time, the project has grown into an active open-source project, supported by a diverse community of software and hardware developers from around the world.

1.4 Comparison of Olimex OpenOCD debuggers

The main difference between ARM-USB-OCD and ARM-USB-OCD-H is the FTDI chip inside – it is almost always recommended to get the -H version since it is much faster (the same applies for ARM-USB-TINY and ARM-USB-TINY-H).

TINY and OCD debuggers are comparable in speed but the OCD design works with lower-voltage targets, can provide power to the target via a barrel jack and has a virtual serial port included – suitable for personal computers that lack a native COM port. The OCD design incorporates active protection buffers that extend the life of the unit in production environments.

Table 1. Olimex OpenOCD debuggers, comparison of features

	ARM-USB-TINY	ARM-USB-TINY-H	ARM-USB-OCD	ARM-USB-OCD-H	ARM-USB-OCD-HL
FTDI chip	FT2232C	FT2232H	FT2232C	FT2232H	FT2232H
Relative debugging speed	SLOWER	FASTER	SLOWER	FASTER	FASTER
Additional power option(*)	NO	NO	YES, 5V-9V-12V	YES, 5V	YES, 5V
Additional VCP(**)	NO	NO	YES	YES	YES
Target voltage range	2.00V - 5.00V	2.00V - 5.00V	2.00V - 5.00V	1.65V - 5.0V	0.65 - 5.5V

(*)The OCD debuggers have a DC barrel jack suitable for powering the target autonomously from the JTAG connector. An extension cable that fits the barrel jack is included in the package. The ARM-USB-OCD can provide 5V or 9V or 12V (controlled via jumper), while ARM-USB-OCD-H can only provide 5V. This feature is useful when you want to power the target board without establishing the JTAG connection. Powering is available on pin 19 of the connector, and the board would attempt to power the target if VREF doesn't detect power or if VREF is not connected.

(**) Additional virtual COM port – the debugger might be used as converter of a serial communication to USB one. A good addition for newer computer systems that lack built-in COM port.

In case you are still wondering which one you should get: ARM-USB-TINY-H is perfectly fine for home use, research and development. ARM-USB-OCD-H is the better choice for professional and production use and for chain programming of target devices.

Another difference between the devices is the product identification number which is different for each different set of debuggers. All four types of OpenOCD debuggers have the same vendor ID. However, each of the debugger series listed above has own product ID. These IDs might be seen in the table below:

Table 2. Olimex OpenOCD debuggers, FTDI vendor and product IDs

	ARM-USB-TINY	ARM-USB-TINY-H	ARM-USB-OCD	ARM-USB-OCD-H	ARM-USB-OCD-HL
VID (Vendor ID)	0x15BA	0x15BA	0x15BA	0x15BA	0x15BA
PID (Product ID)	0x0004	0x002a	0x0003	0x002b	0x002b

You might need the IDs in several cases but mainly when you want to wipe the drivers with a third party program.

1.5 Organization

Each section in this document covers a separate topic, organized as follow:

- Chapter 1 is an overview of the board usage and features
- Chapter 2 provides information about the connectors and the status LEDs
- Chapter 3 provides a guide for quickly setting up the board and the needed software
- Chapter 4 is a frequently asked questions section
- Chapter 5 features a set of useful links, warranty info and purchase locations

CHAPTER 2: DEVICE DESCRIPTION

2. Introduction to the chapter

This chapter features explanation of the interfaces visible to the user. Most of the time those would be the only parts of the debugger that the user would manipulate or make contact with.

There is only one major difference in the appearance of ARM-USB-OCD and ARM-USB-OCD-H – the first has two jumpers near the JTAG connector. These jumpers are responsible for the selection of the voltage output available at the barrel jack – either 5V (by default), 9V or 12V. ARM-USB-OCD-H lacks such jumpers since it can provide only 5V to the target.

2.1 Status LED

The debugger has one double color (red/green) LED on the top. Upon USB connection the LED might power up. However, it is mainly meant to indicate programming/debugging in progress. The red LED should blink when you have an on-going operation (read, write).

2.2 Ports and connectors

The user can freely access the USB and the JTAG connector available. The pinouts and the usage of those are discussed below.

2.2.1 USB connector

- USB type C connector

ARM-USB-OCD-H manufactured after March 2022 come with smaller box and USB type C connector which is a lot more common connector.

- USB type B connector

Some variants of the board and older revisions of ARM-USB-OCD-H come with USB type B connector. The USB type B connector follows the USB 2.0 specification. The connector itself looks like this:



You would most likely need a suitable cable to connect the debugger to your personal computer. The cable should be USB A-B type. You might find a cable like that in the Olimex web-shop or any electronics store nearby.

The USB communication is handled by an FTDI chip inside the box. The drivers required are FTDI ones

with modified VID and PID numbers to fit the Olimex own VID and debugger's PID. You can find more information about the drivers required in chapter "3.3.2 Drivers and driver installation" and its sub-chapters.

2.2.2 JTAG connector

The JTAG connector is a 20-pin male one. It has the standard ARM JTAG 20 at 2.54mm (0.1") pitch, specified by IEEE 1149.1. There is a female-female ribbon cable included in the box of ARM-USB-OCD for easier connection to the target board.

There is a small mark over the connector that indicates where the first pin is located. It might be difficult to spot it at first glance (because of the casing) so please also consider that the cable that comes with the debugger has the first wire colored in red.

The pinout of the JTAG connector is shown in the next table (#3):

PIN #	Signal name	PIN #	Signal name
1	VREF	2	VREF
3	TTRST_N	4	GND
5	TTDI	6	GND
7	TTMS	8	GND
9	TTCK	10	GND
11	TRTCK	12	GND
13	TTDO	14	GND
15	TSRST_N	16	GND
17	NOT CONNECTED	18	GND
19	TARGET SUPPLY	20	GND

Pins 1 and 2 of the JTAG connector are voltage reference that probes if the target is already powered by another source. If it is not, the ARM-USB-OCD would attempt to power it by 5V at pin 19 of the connector. Please note that the USB standard allows limited amount of power. Powering the board from the debugger is not always reliable (especially if the target board has a lot of power-hungry peripherals). It is recommended to use external power supply for bigger target boards.

Notice that VREF is mandatory signal when your target is powered from another source! Do not confuse SRST and TRST – SRST pin 15 is mandatory signal, TRST pin 3 is optional signal.

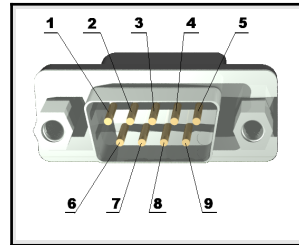
If instead of the standard 20-pin 2.54mm (0.1") JTAG connector your board has the mini version – the 10-pin 1.27mm (0.05") – then you might use the ARM-JTAG-20-10 adapter which is sold separately. This adapter does not provide SWD capabilities (look for ARM-JTAG-SWD for such an expansion). The ARM-JTAG-20-10 adapter can be used with debuggers manufactured by other companies as long as they follow the standard 20-pin JTAG layout suggested by ARM Holdings.

2.2.3 RS232 connector

After the drivers are properly installed ARM-USB-OCD creates a separate virtual COM port which acts as a standard COM port. You can access it by the DB9 RS232 male connector. The RS232 function works simultaneously with the JTAG interface and functions.

Table 4. RS232 male connector

Pin #	Signal Name
1	RS232 DCD
2	RS232 RX
3	RS232 TX
4	RS232 DTR
5	GND
6	RS232 DSR
7	RS232 RTS
8	RS232 CTS
9	Not connected



2.2.4 Power out barrel jack

The debugger has a center-positive DC barrel jack. It provides DC voltage output. This option is especially helpful if you just want to power your target board without establishing a JTAG connection. The power supply available at the barrel jack is taken from the USB type B.

Do not provide power to the DC barrel jack! This is not a power input!

An extension cable that fits the barrel jack is included in the package. It has a total length of 30 centimeters. The cable can be used between the barrel jack of the debugger and the barrel jack of the target board.

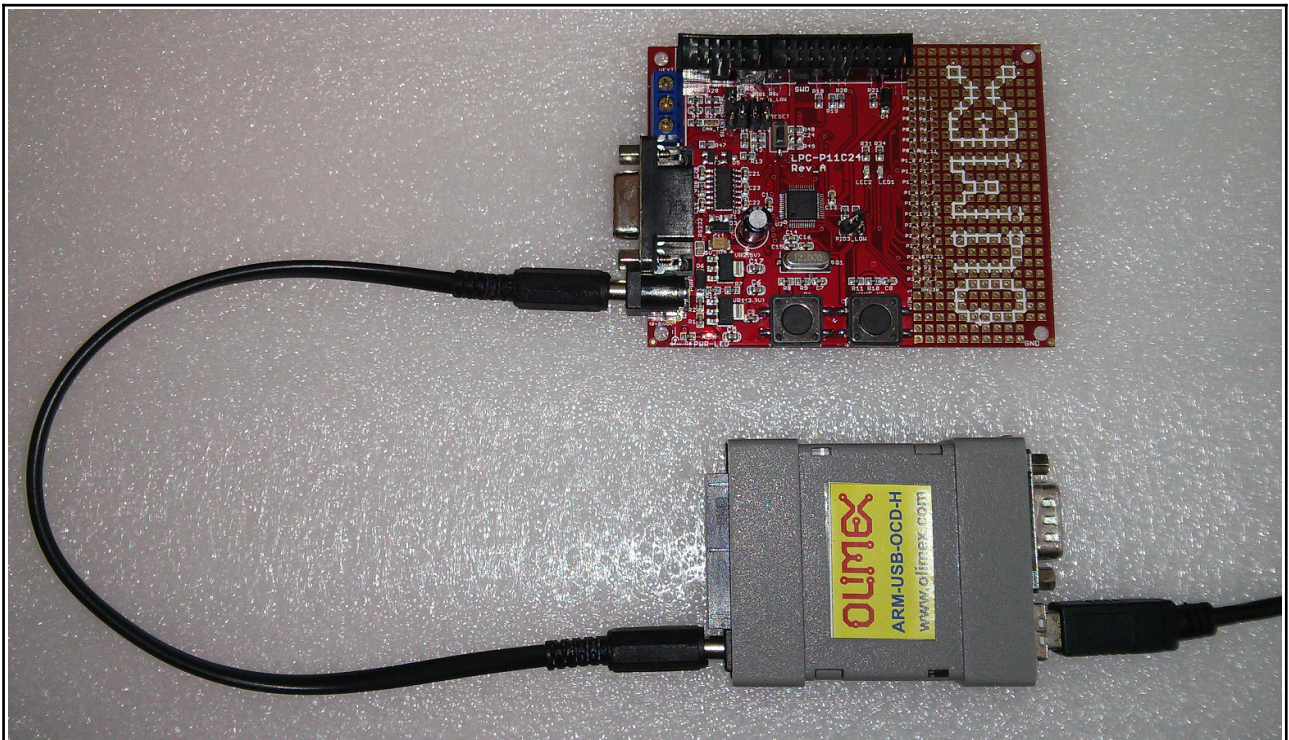
The DC barrel jack has a 2.0mm thick inner pin and 6.3mm hole diameter. The inner pin carries the positive voltage. The corresponding power supply plug (or female jack) that fits the above DC barrel has 2.1mm hole diameter and 5.5mm outer diameter. The cable which is included in the package of the debugger has such female jacks at both ends.

The voltage available at the power out barrel jack depends on the exact product you have! The voltage available at the PWR_OUT barrel jack might vary ARM-USB-OCD or ARM-USB-OCD-H.

By default both debugger designs can provide 5V DC to the PWR_OUT jack. However, ARM-USB-OCD has two jumpers that can enable 9V DC voltage output or 12V DC voltage output. The power supply jumpers are on right side of the 2×10 pin JTAG connector.

- If both jumpers are open the output voltage is 12VDC
- If right jumper is closed the output voltage is 9VDC
- If left jumper is closed the output voltage is 5VDC (this is the default setting)

A typical connection using the DC barrel jack is shown on the next page:



ARM-USB-OCD-H powering LPC-P11C24 (via the PWR_OUT jack).

CHAPTER 3: SETTING UP ARM-USB-OCD

3. Introduction to the chapter

More details about the standard connection routine of Olimex ARM-USB-OCD and your target via the most often used development environments.

You can find the guidelines to use ARM-USB-OCD and the similar Olimex products below. Consider that the information as a basis for operation – there are whole books written on any of the sub-chapters.

Make sure to check the online resources for further reading. Such might be found at our wiki site.

3.1 Basic system setup

Generally, to be able to use ARM-USB-OCD you need a target board or microcontroller and a personal computer.

Usually, setting up the hardware is a pretty straight-forward – “plug the cables” type of installation. Setting up the software and the drivers properly, might provide more of a challenge.

You need to ensure that the target is supported in the software you are going to use and also that the target has a JTAG interface (unless you also have ARM-JTAG-SWD adapter). It is recommended to do so before the purchase of the debugger.

SWD interface is supported only if you use the additional adapter mentioned in sub-chapter “3.5 Rowley Crossworks for ARM”.

3.2 Detailed hardware setup

The required hardware for successful connection might vary depending on the target board and chip. The software options might be further limited by the hardware you might use for your desired task.

The ARM-USB-OCD comes with a ribbon extension cable. It has two 20-pin female-female connectors in 2.54mm (0.1") pitch. The connectors are placed at both end of the cable. Using the cable you can connect the debugger to a target board with a 20-pin male connector with the same pin pitch. The processor of the target board should have a standard JTAG programming and debugging interface (IEEE 1149.1 Standard Test Access Port and Boundary-Scan Architecture). If it has a smaller connector (1.27mm, 0.05" pitch) you might use the ARM-JTAG-20-10 adapter.

The debugger comes **without** USB type A – USB type B cable.

Please note ARM-USB-OCD hardware design does NOT support SWD (Serial Wire Debug) interface. Extension adapter for SWD might be purchased separately. The product name of the adapter is “ARM-JTAG-SWD”.

There are whole families of low-density microcontrollers that have only SWD interface. ARM-USB-OCD can't be used out-of-the-box with such targets! Make sure your microconontroller's datasheet specifically mentions it has JTAG interface.

When aiming to use ARM-USB-OCD for SWD-only targets please refer to the hardware and software notes about SWD.

The additional adapter for 10-pin 1.27mm connector is also sold separately.

The additional tools mentioned above might be found at the following links:

1. USB-A-B-CABLE: <https://www.olimex.com/Products/Components/Cables/USB-A-B-CABLE/>
2. ARM-JTAG-SWD: <https://www.olimex.com/Products/ARM/JTAG/ARM-JTAG-SWD/>
3. ARM-JTAG-20-10: <https://www.olimex.com/Products/ARM/JTAG/ARM-JTAG-20-10/>

3.2.1 Enabling SWD interface for ARM-USB-OCD

ARM-USB-OCD debuggers lacks SWD interface by hardware design but such can be added. You can use the ARM-JTAG-SWD adapter to enable the SWD interface of ARM-USB-OCD debuggers.

Connect the adapter to Olimex programmers in the following way:

JTAG debugger – SWD interface – JTAG ribbon cable – Target;

i.e. connect the SWD adapter directly to the programmer with no cable in-between them!

3.3 Detailed software setup

ARM-USB-OCD might be used with a wide range of software tools. Customers have reported successful usage of ARM-USB-OCD under Windows, Linux and Mac.

The typical usage of ARM-USB-OCD is within an open-source environment. However, despite that the unit is sold under the “OpenOCD” tag and its OpenOCD compatibility, the ARM-USB-OCD debugger has far wider software support. Most of the commercial integrated development environments had already sensed the potential behind the cheap and wide-spread OpenOCD debuggers and had implemented ways of the interacting with such debuggers in their products. Some of the popular commercial IDEs that work fine with ARM-USB-OCD are IAR EW for ARM and Rowley Crossworks for ARM. The debugger also works with the free CoCoX IDE.

Please note that the instructions below might not be accurate by the time of reading. OpenOCD is a community-driven open source project and things might change drastically between release version. It is always advisable to refer to the official documentation of OpenOCD for latest instructions. There are a such instructions on the OpenOCD web-site.

3.3.1 Getting OpenOCD

You can either download a ready package or compile OpenOCD from sources. The first choice is faster but the second option allows you to customize the OpenOCD and use a specific configuration. One of the most important parts of such a compilation is the point where you select what drivers would be expected from OpenOCD – FTDI or LibUSB.

If you are a beginner it is recommended to get an already compiled OpenOCD package.

If you are using Windows I recommend you to download an already compiled package for OpenOCD. You can get it from here: <https://www.olimex.com/Products/ARM/JTAG/resources/OpenOCD-OLIMEX-WINDOWS.zip>

Frequently updated and ready-to-use packages might also be found at Freddie Chopin's web site: <http://www.freddiechopin.info/>. Download the latest version and extract it and you are good to go!

If you want to use a ready package under Linux try with:

```
sudo apt install openocd
```

You can find all information about OpenOCD in the official “OpenOCD User’s Guide” here:

<http://openocd.org/doc/pdf/openocd.pdf>

If you decide to go with an already compiled OpenOCD package skip to next chapter where the driver installation is detailed. If you are going to compile the OpenOCD yourself continue reading below.

If you wish to compile OpenOCD under Windows you would need a proper software tool to compile the sources. Since you can't use most Linux tools (which were used during the creating of OpenOCD) directly in Windows you would need a tool that provides essential Linux tools under Windows. Most people use Cygwin for such purposes – it is available for download here: <http://www.cygwin.com/>. You would need to install the proper packages and then the compilation would be just like in the Linux instructions below.

It is easier to compile the latest sources for OpenOCD under Linux. You need to get the sources from the master branch here: <http://git.code.sf.net/p/openocd/code>. Usually the repository might be checked out using a Git client. The code below shows how to get a git client, install it, then checkout the sources then checkout a specific version:

```
cd ~
sudo apt-get install git libtool automake texinfo
git clone http://git.code.sf.net/p/openocd/code openocd-code
cd openocd
git tag -l
git checkout v0.10.0
```

After that you would need to set proper configuration options. The two main paths are – compile for FTDI drivers support or compile for LibUSB support.

Please notice that since OpenOCD 0.8.0 FTDI drivers are recommended! It was quite the opposite before 0.8.0 when LibUSB drivers were suggested as default.

If you are going for FTDI driver support:

```
./bootstrap
./configure --enable-ftdi --enable-ft2232_ftd2xx
make
make install
```

If you are going for the LibUSB driver support:

```
./bootstrap
./configure --enable-maintainer-mode --enable-ft2232_libftdi
make
sudo make install
```

After the OpenOCD is ready (no matter if you compiled it or downloaded it ready) you would need drivers for the debugger.

3.3.2 Drivers and driver installation

ARM-USB-OCD requires the installation of drivers to be able to operate properly.

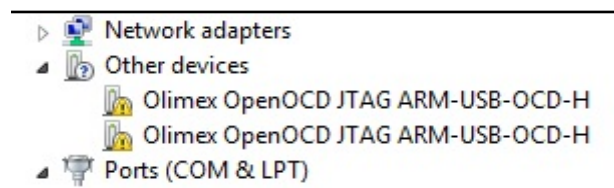
There are a number of drivers available for the debugger. This is because the original drivers are written and distributed by FTDI (a Scottish company) and they are considered proprietary piece of software. Because the initial idea of the OpenOCD is to be fully open source (as its name indicates) people decided to release and maintain open drivers (not proprietary). That is why there are also a number of such drivers suitable for ARM-USB-OCD. The drivers are related to the integrated development environment that you are going to use (or the lack of such, e.g. if you decide to work only with OpenOCD). Some IDEs requires specific set of drivers.

Please note that some Windows, MAC and Linux distributions might provide automatic driver update feature – this might cause the download and install of wrong FTDI drivers. Please ensure that automatic driver updates had been disabled temporarily.

3.3.3 Driver installation in Windows

Before attempting any driver installation under Windows you would need to ensure that no drivers are present when the tool is plugged in the computer. Open “Windows Device Manager” and ensure that there are no drivers present when the debugger is plugged to the computer. If Windows automatically installs drivers after you plug the tool to the computer – you would need to uninstall them and disable the automatic driver installation temporarily. For newer Windows versions you would also need to disable the “Driver Signature Verification” which is enabled by default. It prevents the installation of any unsigned drivers to your system.

After you plug ARM-USB-OCD-H for the first time and you open "Windows Device Manager" you should see two entries under "Other devices" like shown below:



The driver installation in Windows would depend on which version of OpenOCD you are using. There is a difference in the driver installation if you are using OpenOCD 0.8.0 or newer and if you are using versions prior to OpenOCD 0.8.0.

The driver that you have to use also depends on the environment you are aiming at. Some IDEs support communication only with LibUSB drivers, others only with FTDI drivers.

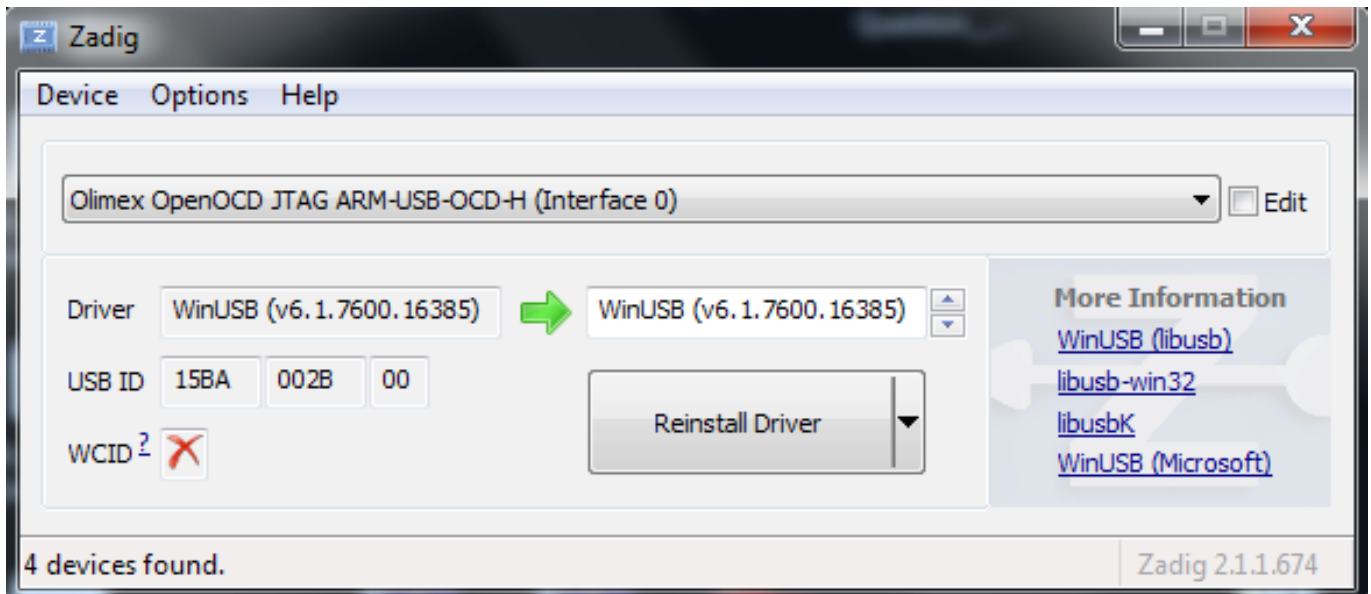
It is recommended to use a piece of software which simplifies the drivers installation (or the change of drivers) It is called Zadig.

The Zadig program might be downloaded from here:

<http://zadig.akeo.ie/>

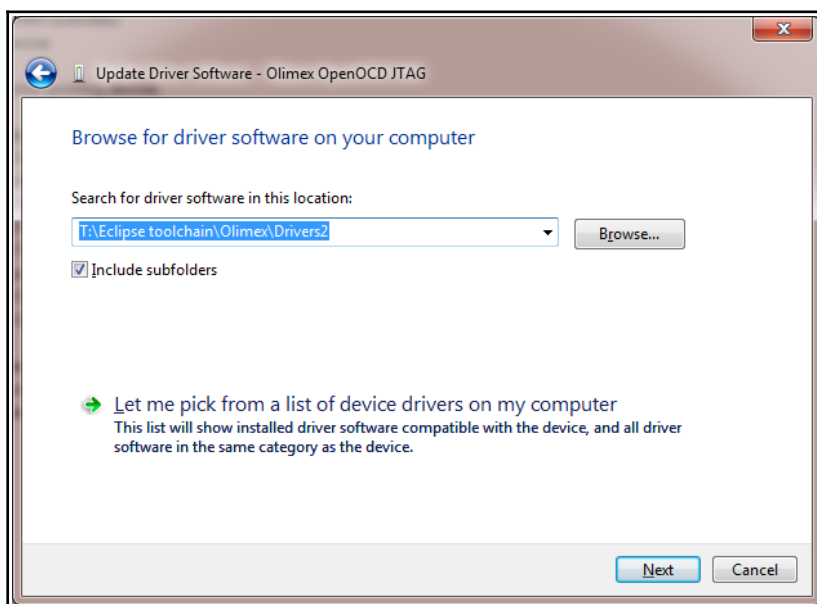
After installation of the program plug ARM-USB-OCD to the computer and you should see the device in the drop down menu with the interfaces populated, as well as the VID and PID boxes. If they don't get populated go to Options → List All Devices. After that select the WinUSB driver and click either the big “Install Driver” button or the “Reinstall Driver” button for each interface. The reinstall button replaces the install button if some old driver associated with the debugger was left over.

Refer to the picture on the next page.



If Zadig doesn't do the job or you are using OpenOCD version prior to 0.8.0 the more robust method is to download an archive with the drivers and point the Windows Device Manager to it manually. Links to those resources might be found at the end of this chapter!

Do not let Windows search for drivers automatically! After choosing the manual install, point the driver updater to the folder where the driver archive was extracted. Upon successful installation you would probably need to repeat the whole process until all unrecognized entries in Windows Device Manager disappear. This usually means that the whole procedure is done four times.



The package of LibUSB drivers (suitable for OpenOCD versions prior to 0.9.0) for manual install might be found here: [https://www.olimex.com/Products/ARM/JTAG/resources/DRIVERS-\(libusb-1.2.2.0-CDM20808\).zip](https://www.olimex.com/Products/ARM/JTAG/resources/DRIVERS-(libusb-1.2.2.0-CDM20808).zip)

Package of FTDI drivers for automatic or manual install might be found here here: <https://www.olimex.com/Products/ARM/JTAG/resources/OLIMEX-FTDI-drivers-2-12-04.zip>

The RS232 interface might need specifically the FTDI drivers to work properly.

If you can't install the drivers on a new Windows systems there might "driver signature enforcement" enabled by default. You would have to disable it since our device drivers are not digitally signed by Microsoft. Instructions how to do it might be easily found online.

3.3.4 Driver installation in Linux

Newer kernels have FTDI drivers ready-to-use. If that is not your case first you need to download the drivers – you can get [the FTDI drivers](#) from their web site. Alternatively you can use apt-get like this:

```
sudo apt-get install libftdi-dev libftdi1
```

Now Ubuntu should recognize the programmer when it is plugged in. But, by default it requires root privileges to use. Therefore, we need to set up a udev rule to change the permissions. This rule assigns the device to the plugdev group – which was introduced in Linux for hot-pluggable devices – and then gives the group read and write access. Make sure your user is in the plugdev group; my user was in it by default.

Create a file `/etc/udev/rules.d/olimex-arm-usb-ocd-h.rules`

Put this single line in the file:

The Olimex vendor and product IDs are part of the driver (VID/PID) and you have to find the right IDs from table 2 (above in this manual). For ARM-USB-OCD-H those are:

```
PID: 0x002b  
VID: 0x15BA
```

```
SUBSYSTEM=="usb", ACTION=="add", ATTRS{idProduct}=="002b", ATTRS{idVendor}=="15ba",  
MODE="664", GROUP="plugdev"
```

Now you should be ready to use the debugger. I recommend you to try the basic OpenOCD connection described in chapter 3.3 below in this document.

3.3.5 Driver installation in MAC OS X

ARM-USB-OCD has an FTDI chip inside (USB-serial converter chip) You need to download the Virtual Com Port (VCP) drivers for the FTDI chip of the JTAG programmer. You can find the OS X drivers at the FTDI web page: <http://www.ftdichip.com/Drivers/VCP.htm>

Some user have reported that in newer OS X releases you might need to disable the “System Integrity Protection” (SIP). This is done differently between releases but there is plenty of information on how it can be done online.

Other users have reported that OS X contains default FTDIUSBSerialDriver driver which conflicts with debug tools which are based on this chip. FTDI Chip company recommends removing this default driver from a system.

For older Mac OS X (prior to 10.10) releases:

The Olimex vendor and product IDs are part of the driver (VID/PID) and you have to find the right IDs from table 2 (above in this manual). For ARM-USB-OCD-H those are:

```
PID: 0x002b (43)
VID: 0x15BA (5562)
```

You would need to edit FTDI driver plist file (/System/Library/Extensions/FTDIUSBSerialDriver.kext/Contents/Info.plist) and put the right PID/VID in decimal. You might want to use a calculator for the conversion (hex to decimal). Search for "Olimex OpenOCD JTAG B" and edit the <integer> fields after the keys idProduct (PID) and idVendor (VID). Remember you need to have root privileges to edit the file.

If you want to have the option to use console port at the same time as you JTAG delete the whole section of "Olimex OpenOCD JTAG A". (<https://rowley.zendesk.com/entries/109072-getting-jtag-and-serial-port-to-work-under-mac-os-x-using-an-olimex-arm-usb-ocd>)

You can either reboot or unload and reload the kernel extension

```
sudo kextunload -b com.FTDI.driver.FTDIUSBSerialDriver
sudo kextload -b com.FTDI.driver.FTDIUSBSerialDriver
```

Now you should see the JTAG come up in the /dev/ folder as /dev/tty.usbserial-OLWVXN1LB and /dev/cu.usbserial-OLWVXN1LB.

It is time to install the D2XX drivers for OpenOCD to use the JTAG programmer. You can download the drivers from <http://www.ftdichip.com/Drivers/D2XX.htm>

After downloading the drivers you have install them by hand. If you have looked at other guides how to install the drivers they are most probably wrong. The directory structure of the driver package changes frequently so you might need to first find the files. This guide works for driver version 1.2.2. Use command line (terminal) to do the following:

```
sudo cp /Volumes/release/D2XX/bin/10.5-10.7/libftd2xx.1.2.2.dylib /usr/local/lib
sudo ln -sf /usr/local/lib/libftd2xx.1.2.2.dylib /usr/local/lib/libftd2xx.dylib
sudo cp ls /Volumes/release/D2XX/bin/ftd2xx.h /usr/local/include
sudo cp /Volumes/release/D2XX/bin/WinTypes.h /usr/local/include
```

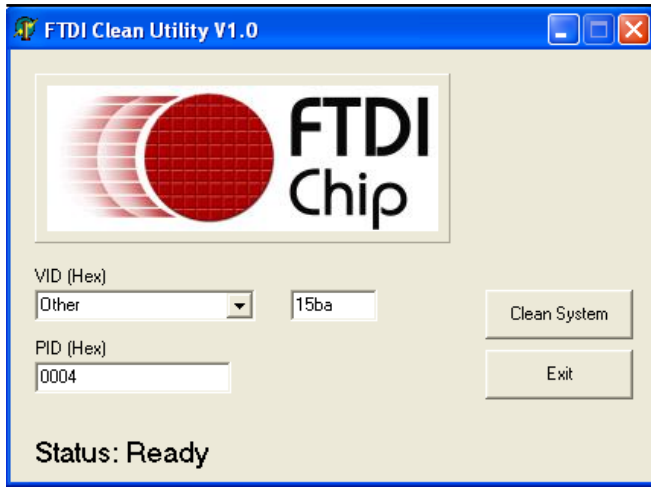
3.3.6 How to uninstall and clean-up previously installed drivers

FTDI provides a Windows-compatible tool for this seemingly easy task. It might be found in the Utilities section of their web-site. We usually use a utility called FTClean for testing purposes. It might be downloaded from here: <http://www.ftdichip.com/Support/Utilities/FTClean.zip>

Before you proceed you should again ensure that your Windows configuration does not allow auto-updates and driver updates from Internet! Else after you uninstall the drivers, they would magically get installed again!

Once you have stopped Windows from automatically installing drivers you might proceed with the usage of the FTClean – disconnect all USB devices, run the FTClean.exe, provide the proper VID and PID (which might be seen in table 2), and, finally, click "Clean" button. You will be prompted few times to

agree that you are aware of what the program does and after it the drivers associated with the device should be gone.



You are now free to install drivers starting right from the beginning.

3.4 Basic OpenOCD connection

The easiest way to determine if the debugger had been properly installed, is to establish connection to a target microcontroller or a target board. After such a basic connection is established you can access the GDB server locally or remotely.

After that you might want to create a script for simple programming or to establish a telnet connection for debugging purposes. You can also configure a graphical environment (like IAR EW for ARM) to establish a connection to the GDB.

How to write a simple script might be found in the document here:

https://www.olimex.com/Products/ARM/JTAG/resources/Manual_PROGRAMMER.pdf

Debugging might also be performed by sending direct commands to the board. After establishing the basic connection described below you can open new terminal and run a telnet connection. The telnet would accept commands on port 4444. More info might be found here:

https://www.olimex.com/Products/ARM/JTAG/resources/Manual_TELNET.pdf

3.4.1 Starting OpenOCD GDB server via FTDI drivers

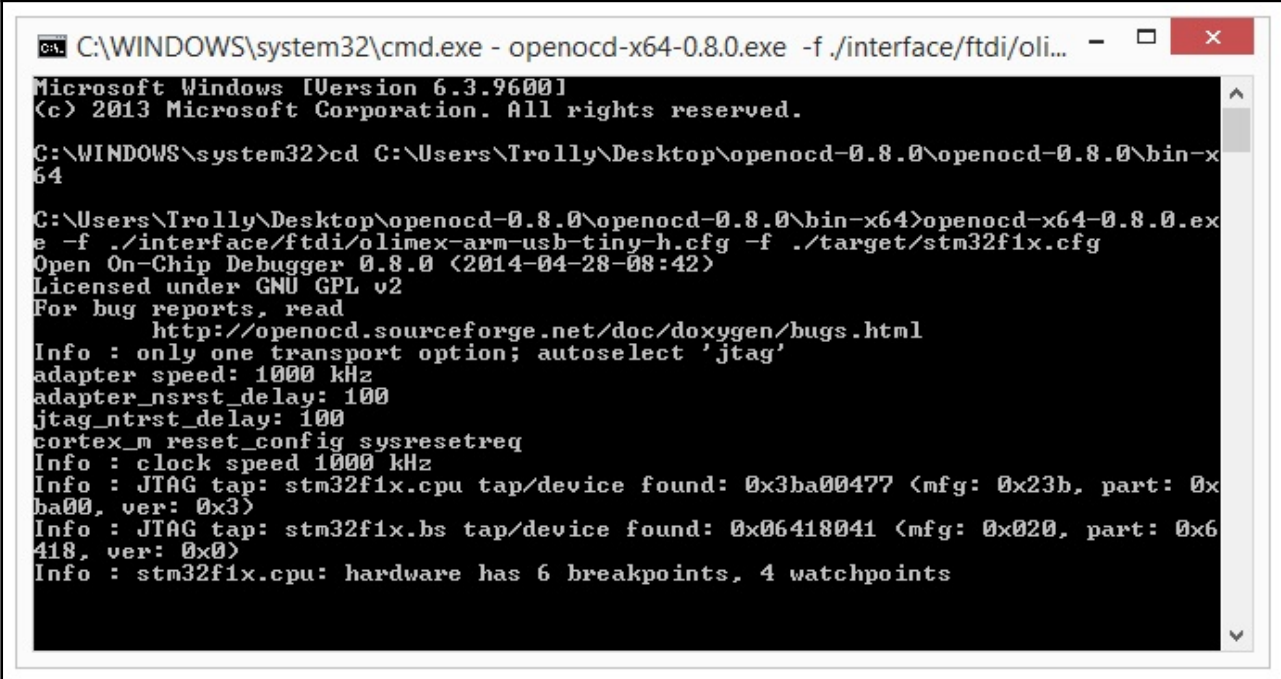
This is the default way to communicate with your target if you use an OpenOCD version 0.8.0 or newer. If you are using a 64-bit operating system and OpenOCD versions 0.8.0 a typical connection command between ARM-USB-OCD-H and a STM32F1 target would look like:

```
openocd-x64-0.8.0.exe -f ./interface/ftdi/olimex-arm-usb-ocd-h.cfg -f
./target/stm32f1x.cfg
```

Note that you need to have navigated to the folder where the executable is located or to write the full path to the executable. The typical successful response of this command would end like:

```
Info: JTAG tap: stm32f1x.cpu tap/device found: 0x3ba00477 (mfg: 0x23b, part: 0xba00,
ver: 0x3)
Info: JTAG tap: stm32f1x.bs tap/device found: 0x06418041 (mfg: 0x020, part: 0x6418,
ver: 0x0)
Info: stm32f1x.cpu: hardware has 6 breakpoints, 4 watchpoints
```

It looks like the picture below:



```
C:\WINDOWS\system32\cmd.exe - openocd-x64-0.8.0.exe -f ./interface/ftdi/oli...
Microsoft Windows [Version 6.3.9600]
(c) 2013 Microsoft Corporation. All rights reserved.

C:\WINDOWS\system32>cd C:\Users\Trolly\Desktop\openocd-0.8.0\openocd-0.8.0\bin-x64
64

C:\Users\Trolly\Desktop\openocd-0.8.0\openocd-0.8.0\bin-x64>openocd-x64-0.8.0.exe
-f ./interface/ftdi/olimex-arm-usb-tiny-h.cfg -f ./target/stm32f1x.cfg
Open On-Chip Debugger 0.8.0 (2014-04-28-08:42)
Licensed under GNU GPL v2
For bug reports, read
  http://openocd.sourceforge.net/doc/doxygen/bugs.html
Info : only one transport option; autoselect 'jtag'
adapter speed: 1000 kHz
adapter_nsrst_delay: 100
jtag_nrst_delay: 100
cortex_m reset_config sysresetreq
Info : clock speed 1000 kHz
Info : JTAG tap: stm32f1x.cpu tap/device found: 0x3ba00477 (mfg: 0x23b, part: 0x
ba00, ver: 0x3)
Info : JTAG tap: stm32f1x.bs tap/device found: 0x06418041 (mfg: 0x020, part: 0x6
418, ver: 0x0)
Info : stm32f1x.cpu: hardware has 6 breakpoints, 4 watchpoints
```

After establishing the GDB server connection described below you can open new terminal and run a telnet connection. The telnet would accept commands on port 4444. More info might be found here: https://www.olimex.com/Products/ARM/JTAG/resources/Manual_TELNET.pdf

3.4.2 Simple target connection via LibUSB drivers

This is the default way to communicate with your target if you use an OpenOCD version prior to 0.8.0. Note that the interface cfg is located at a different place compared to the previous example with FTDI drivers.

```
openocd -f interface/olimex-arm-usb-ocd-h.cfg -f target/stm32f1x.cfg
```

```
Info : JTAG tap: stm32f1x.cpu tap/device found: 0x3ba00477 (mfg: 0x23b, part: 0xba00, ver: 0x3)
```

```
Info : JTAG tap: stm32f1x.bs tap/device found: 0x06418041 (mfg: 0x020, part: 0x6418, ver: 0x0)
```

```
Info : stm32f1x.cpu: hardware has 6 breakpoints, 4 watchpoints
```

3.4.3 Simple SWD target connection with ARM-JTAG-SWD

Note that the ARM-JTAG-SWD adapter is supported in OpenOCD versions 0.9.0 or newer. You can't establish a successful connection with OpenOCD older than 0.9.0.

The SWD connection requires an additional parameter.

```
openocd -f interface/ftdi/olimex-arm-usb-ocd-h.cfg -f interface/ftdi/olimex-arm-jtag-swd.cfg -f target/stm32f1x.cfg
```

The response to a successful connection looks like:

```
Info : FTDI SWD mode enabled
```

```
adapter speed: 1000 kHz
```

```
adapter_nsrst_delay: 100
```

```
cortex_m reset_config sysresetreq
```

```
Info : clock speed 1000 kHz
```

```
Info : SWD IDCODE 0x1ba01477
```

```
Info : stm32f1x.cpu: hardware has 6 breakpoints, 4 watchpoints
```

3.5 Advanced OpenOCD practices

Information on few common and often requested practices are detailed below. You would find the answers to commonly raised questions like “how to use multiple OpenOCD debuggers to the same computer?” and “how to change the vendor and product identification numbers (VID and PID) of the device?”.

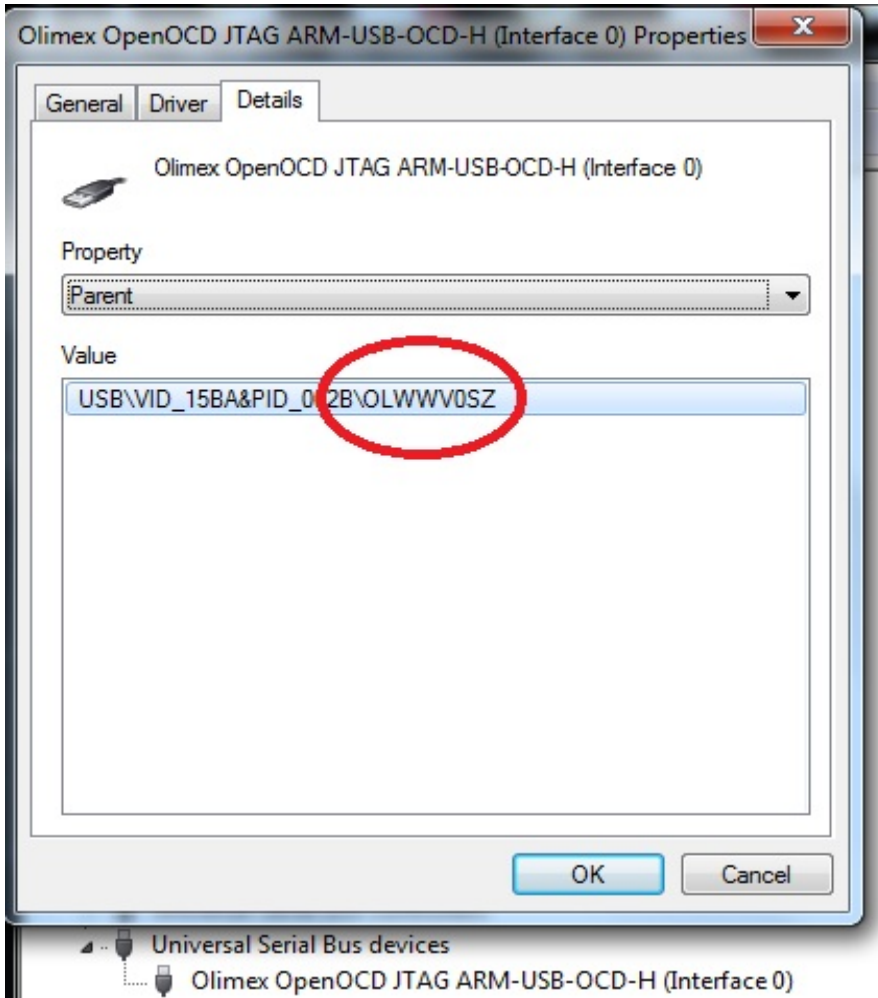
3.5.1 Using multiple ARM-USB-OCD interfaces

In OpenOCD there is a specific parameter that allows the usage of multiple debuggers on the same computer. Despite that the OLIMEX debuggers have the same VID and PID, they have unique serial numbers. The serial number is stored in the “iSerial” property of the USB information. After we have identified the serial number of each connected debugger we need to create own configuration file for each debugger. The debugger's serial number has to be defined with “ftdi_serial”.

The easiest way to determine the serial number in Linux is to use “lsusb -v” and then identify the port and the “iSerial” property in the detailed information.

The easiest way to determine the serial number in Windows is to check the properties of the interface in the “Windows Device Manager”. In “Details” tab select “Parent” category from the drop-down menu. Refer to the screenshot on the next page!

If you have trouble identifying the serial number you might want to use third party USB analyzer program.



For example, if we want to use two ARM-USB-OCD-H (with serial numbers “OLWWV0SZ” and “OLXZY1SP”) to the same computer we need to make two files “olimex-arm-usb-ocd-h1.cfg” and “olimex-arm-usb-ocd-h2.cfg” we would need to include the following:

-olimex-arm-usb-ocd-h1.cfg-

```
interface ftdi
ftdi_device_desc "Olimex OpenOCD JTAG ARM-USB-OCD-H 1"
ftdi_vid_pid 0x15ba 0x002b
ftdi_serial OLWWV0SZ
```

-olimex-arm-usb-ocd-h2.cfg-

```
interface ftdi
ftdi_device_desc "Olimex OpenOCD JTAG ARM-USB-OCD-H 2"
ftdi_vid_pid 0x15ba 0x002b
ftdi_serial OLXZY1SP
```

More information on `ftdi_serial` might be found in the official documentation here:
<http://openocd.org/doc/html/Debug-Adapter-Configuration.html>

3.5.2 Changing the VID and PID of the debugger

DISCLAIMER: CHANGING THE VID AND PID IS NOT RECOMMENDED FOR BEGINNERS. IT MIGHT LEAVE YOUR DEBBUGER IN INRECOVERABLE STATE. SUCH A CHANGE IS NOT NEEDED FOR TYPICAL USAGE OF THE TOOL AND WE DO NOT ENCOURAGE IT.

There is a software way to change the VID and PID and the firmware information. It doesn't require additional hardware tools.

Remember that changing the PID (product ID) would also require to change the definitions in the drivers and the script in OpenOCD. Changing the VID and PID requires new drivers!

To change any of the FTDI information on ARM-USB-OCD you would need a program called MPROG which might be found here: <http://www.ftdichip.com/Support/Utilities/MProg3.5.zip>

MProg works only with D2XX drivers. For Windows users: please go to “Windows Device Manager” and uninstall and delete all drivers associated with ARM-USB-OCD (you might need to do it multiple times; you might need to disable automatic driver update and installation) until there are simply two unrecognized interfaces listed. Then download the FTD2XX drivers (from here: <https://www.olimex.com/Products/ARM/JTAG/resources/driver-ftd2xx.zip>), extract them somewhere and point manually the installer to that location.

How to use MProg:

1. You need to be sure that you are using FTDI D2XX drivers (not libUSB, not WinUSB, etc).
2. Start MProg
3. Select the FT223H tab in the list in the right part of the interface
4. Under "Programming Options", near the bottom, remove the tick "Only Program Blank Devices".
5. Click "Scan and Parse". If no device shows up – you are not using D2XX drivers. Read above.
6. Click "Edit mode" - until you save the original template the program would not allow you to edit anything
7. Edit the PID
8. Click "Program All Existing Devices".

At this point, if you are using Windows, the debugger would disappear from the list in “Windows Device Manager”. Use Zadig or edit the inf files to make the required drivers (just replace the old PID with the new PID).

3.6 IAR Embedded Workbench for ARM

After installation of the drivers you need to establish a basic connection between the target and OpenOCD via a command line (as explained in chapter "3.3.1 Simple target connection via FTDI drivers"). Finally, you need edit the project settings to be able to use ARM-USB-OCD successfully (Project properties → GDB server).

Please note that IAR Embedded Workbench is a commercial product not available for free use. However, there are packages with either time-limited functionality or size-limited binary code which may be used for evaluation purposes of the described configuration.

Please visit:

<http://www.iar.com>

,and get the desired product. Installation guide should be available inside the package.

OpenOCD server needs a configuration file upon startup. The default is 'openocd.cnf' so do not get upset if you start 'openocd-libftdi.exe' and end up with an error message. A typical solution is to override the search for the configuration file and provide one or more configuration files with different names. For your convenience configuration files are divided into 2 types, one to configure the JTAG interface being used and another to configure the target processor.

Interface configuration files for the supported JTAG adapters are placed inside the directory of OpenOCD executable. Sample target configuration scripts are located in the 'OpenOCD\tcl\target' directory.

You might check the following document for more information: https://www.olimex.com/Products/ARM/JTAG/resources/Manual_IAR.pdf

3.7 Rowley Crossworks for ARM

Rowley Crossworks is another propriety integrated development environment. It offers excellent support for Olimex OpenOCD debuggers. Furthermore, there are ready examples for a number of Olimex ARM boards that shortens the development time required.

It is recommended to use LibUSB drivers with Rowley Crossworks. However, it can work with either LibUSB or FTDI drivers.

The LibUSB drivers are installed via Zadig installer (select Options → List All Devices, then select the Olimex product from the drop down menu), select to install the “libusb-win32” driver. Make sure to select the LibUSB driver in Crossworks to be associated with the device.

The FTDI drivers are available for download here:

<https://www.olimex.com/Products/ARM/JTAG/resources/OLIMEX-FTDI-drivers-2-12-04.zip>

Crossworks supports the ARM-JTAG-SWD adapter which, as mentioned, extends the debugger's hardware capabilities. ARM-JTAG-SWD provides a SWD interface in addition to the JTAG one available by the default.

There is profile for ARM-USB-OCD in Crossworks – it works with both ARM-USB-OCD and ARM-USB-OCD-H. The ready-to-use configuration also works fine for a SWD setup – a debugger with ARM-JTAG-SWD. **If you experience disconnects make sure to set disable “Fast Memory Accesses” – set “Fast Memory Accesses” to “No”. If you experience disconnects you might increase the “JTAG Clock Divider” from 1 to 2 or 4.**

You can also add "Generic FTD2232" target interface, instead of the default one you have to do as follows:

Right-click on a blank space in the targets window and select "New Target Interface > Generic FT2232 Device". Right-click on the new target interface and select "Properties" - set the following properties:

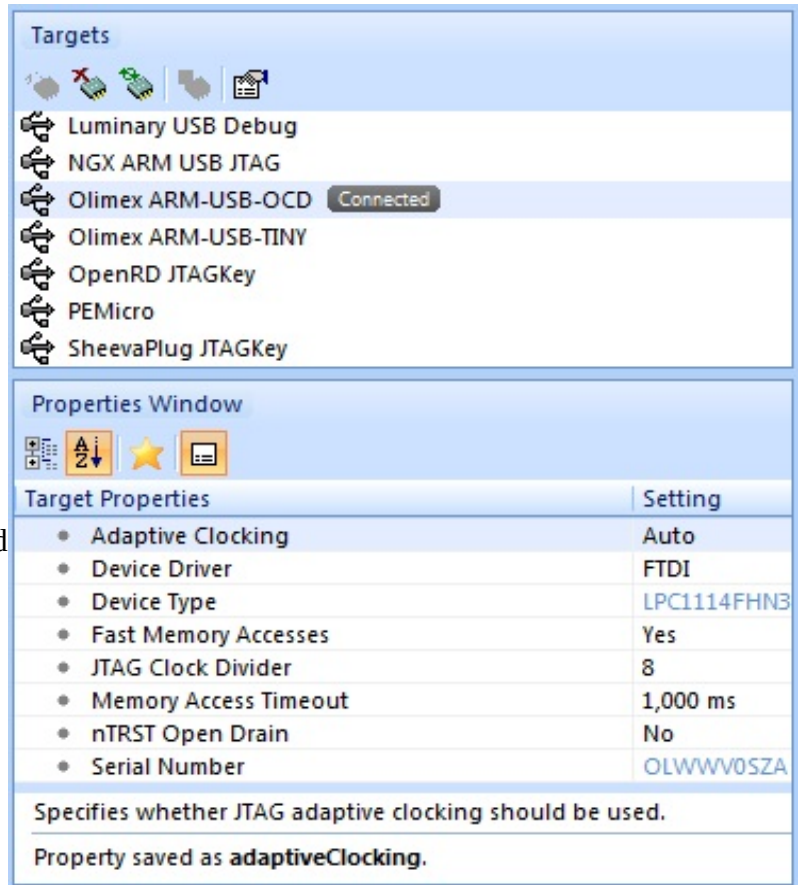
Connected LED Inversion Mask 0x0000

Connected LED Mask = 0x0800
 nSRST Inversion Mask = 0x0200
 nSRST Mask = 0x0200
 nTRST Inversion Mask = 0x0000
 nTRST Mask = 0x0100
 Output Pins = 0x0F1B
 Output Value = 0x0D08
 Running LED Inversion Mask = 0x0000
 Running LED Mask = 0x0800

PID: 0x002b
 VID: 0x15ba

The correct VID and PID for your device might be found in table 2 in case you missed it. The SWD interface via ARM-JTAG-SWD might require different manual settings compared to the JTAG ones.

You can see a properly connected ARM-USB-OCD-H + ARM-JTAG-SWD in Crossworks 3.5.1 in the picture to right (using FTDI driver).



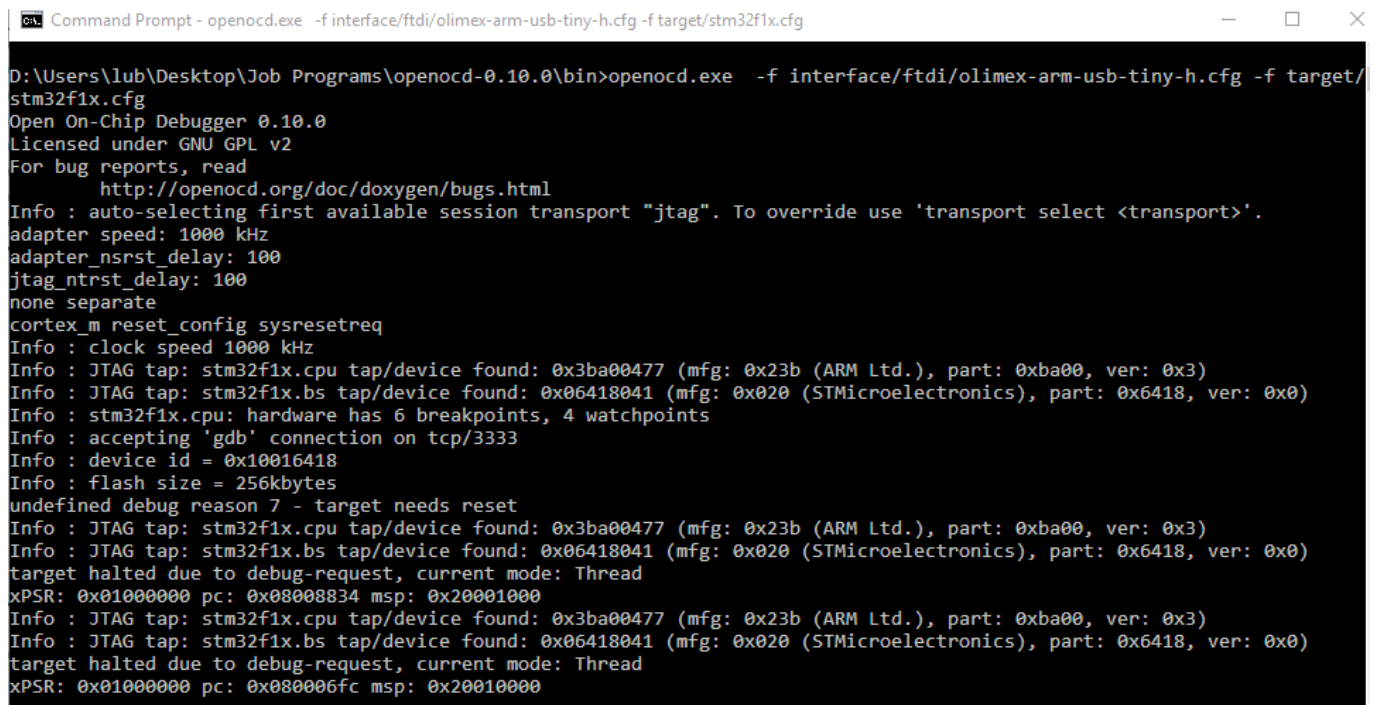
3.8 STM32CubeIDE

Download stand-alone OpenOCD and run GDB server between the ARM-USB-OCD and the target that you have via command line (refer to chapter “3.4 Basic OpenOCD connection”). Then configure STM32CubeIDE to that server from "Connect to remote GDB server".

For example, I used ARM-USB-OCD-H and Olimex STM32-P107 board (with STM32F1x chip). The command line looks like this:

```
openocd.exe -f interface/ftdi/olimex-arm-usb-ocd-h.cfg -f target/stm32f1x.cfg
```


For your specific target just the stm32f1x.cfg file would be different. Then I started STM32CubeIDE, created blank project, edited the debug configuration options from Run-Debug and it worked fine. Refer to the screenshots below:



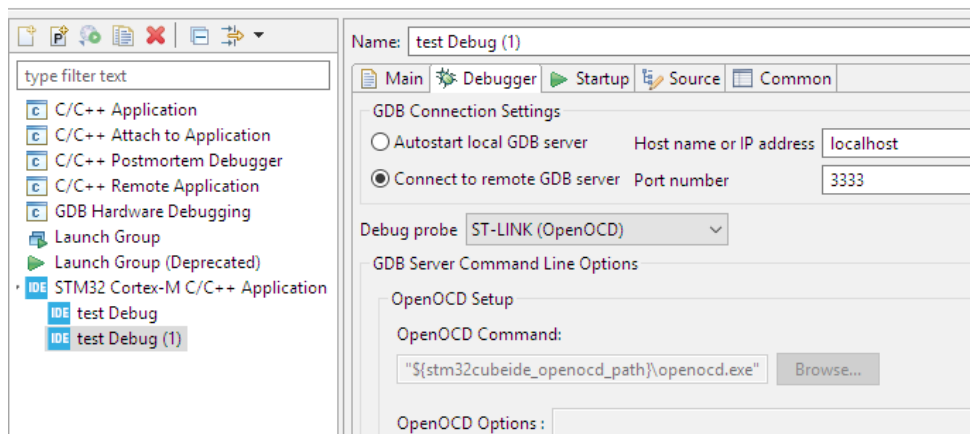
```

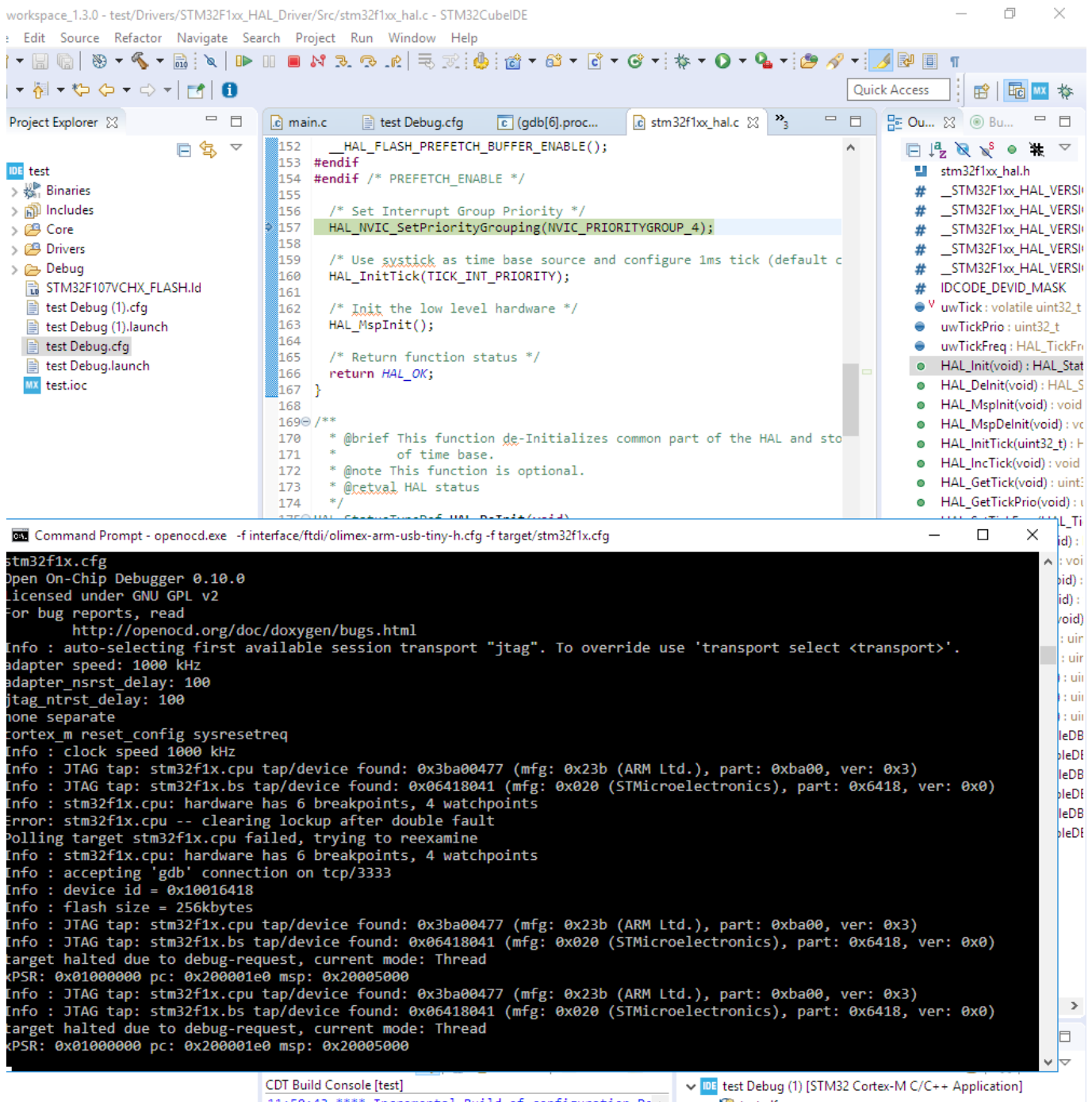
C:\> Command Prompt - openocd.exe -f interface/ftdi/olimex-arm-usb-tiny-h.cfg -f target/stm32f1x.cfg
D:\Users\lub\Desktop\Job Programs\openocd-0.10.0\bin>openocd.exe -f interface/ftdi/olimex-arm-usb-tiny-h.cfg -f target/
stm32f1x.cfg
Open On-Chip Debugger 0.10.0
Licensed under GNU GPL v2
For bug reports, read
  http://openocd.org/doc/doxygen/bugs.html
Info : auto-selecting first available session transport "jtag". To override use 'transport select <transport>'.
adapter speed: 1000 kHz
adapter_nsrst_delay: 100
jtag_nrst_delay: 100
none separate
cortex_m reset_config sysresetreq
Info : clock speed 1000 kHz
Info : JTAG tap: stm32f1x.cpu tap/device found: 0x3ba00477 (mfg: 0x23b (ARM Ltd.), part: 0xba00, ver: 0x3)
Info : JTAG tap: stm32f1x.bs tap/device found: 0x06418041 (mfg: 0x020 (STMicroelectronics), part: 0x6418, ver: 0x0)
Info : stm32f1x.cpu: hardware has 6 breakpoints, 4 watchpoints
Info : accepting 'gdb' connection on tcp/3333
Info : device id = 0x10016418
Info : flash size = 256kbytes
undefined debug reason 7 - target needs reset
Info : JTAG tap: stm32f1x.cpu tap/device found: 0x3ba00477 (mfg: 0x23b (ARM Ltd.), part: 0xba00, ver: 0x3)
Info : JTAG tap: stm32f1x.bs tap/device found: 0x06418041 (mfg: 0x020 (STMicroelectronics), part: 0x6418, ver: 0x0)
target halted due to debug-request, current mode: Thread
xPSR: 0x01000000 pc: 0x08008834 msp: 0x20001000
Info : JTAG tap: stm32f1x.cpu tap/device found: 0x3ba00477 (mfg: 0x23b (ARM Ltd.), part: 0xba00, ver: 0x3)
Info : JTAG tap: stm32f1x.bs tap/device found: 0x06418041 (mfg: 0x020 (STMicroelectronics), part: 0x6418, ver: 0x0)
target halted due to debug-request, current mode: Thread
xPSR: 0x01000000 pc: 0x080006fc msp: 0x20010000

```

 Debug Configurations

Create, manage, and run configurations





3.9 CoCoX CoIDE (discontinued)

This environment is no longer maintained nor updated.

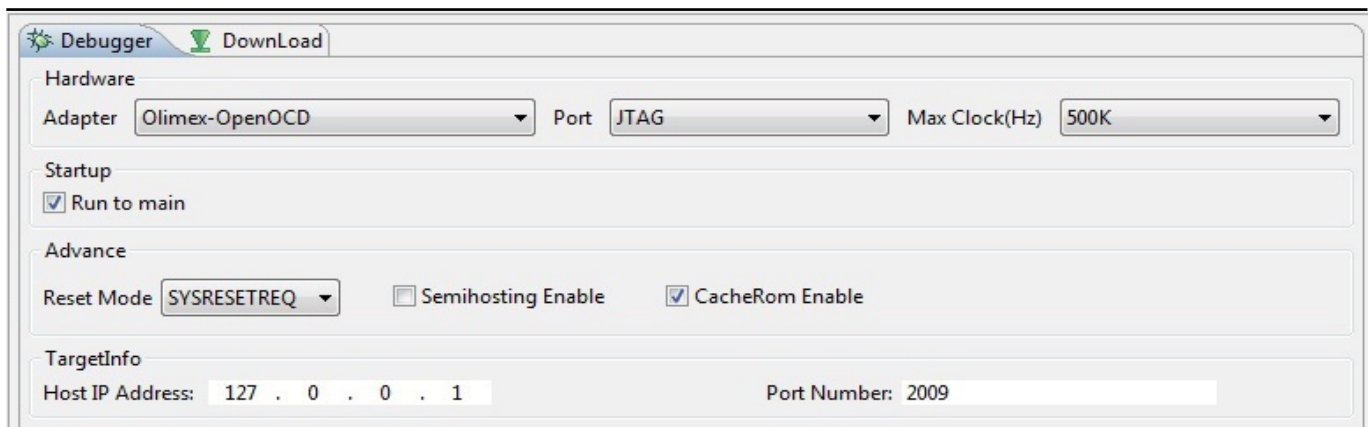
CoCoX CoIDE was free and highly-integrated software development environment for ARM based microcontrollers, which included all the tools necessary to develop high-quality software solutions in a timely and cost effective manner. It was recently discontinued, but maybe you still have a copy somewhere.

CoIDE had built-in support for Olimex OpenOCD tools. To make them work together install the drivers as explained in "3.2.2 Drivers and driver installation" and edit the debug configuration of the project to match the debugger. **Please note that CooCox uses FTDI drivers. The LibUSB and the WinUSB drivers will NOT work with CooCox IDE.**

Click Debug - > Debug Configuration and set the settings in the following order:

Adapter: Olimex-Open OCD, Port: JTAG, Max Clock – 500K Hz, Startup – check Run to main, Reset Mode: SYSRESETREQ; Disable the Semi-hosting since it isn't stable yet; Enable caching for faster debugging; the host address for the GDB is local host e.g. 127.0.0.1 and the port is 2009.

The configuration might be seen on the pictures below:



Additional information might be found in the following document:

https://www.olimex.com/Products/ARM/JTAG/resources/How_to_run_CooCox_with_Olimex_JTAGs_v2.pdf

3.10 Olimex Open Development Suite (ODS) package (discontinued)

This environment is no longer maintained nor updated.

Olimex provides own free distribution of an open-source Integrated Development Environment (IDE). There are several modules that are required to provide the same feel as commercial products. The ODS is consisted of Eclipse IDE + YAGARTO + Zylind Embedded + OpenOCD. It is packed with a Windows installer so if you are a pure Linux user you might want to skip this chapter.

The package is primarily meant to be used by people who own an Olimex OpenOCD debugger and one of the supported Olimex boards. It might be a very helpful software package for the OpenOCD beginners.

The debuggers supported are:

ARM-USB-TINY
 ARM-USB-TINY-H
 ARM-USB-OCD
 ARM-USB-OCD-H

The boards supported are:

LPC-H2294
LPC-L2294
LPC-P2378
SAM7-EX256
SAM7-MT256
SAM7-P256
STM32-E407
STM32-H103
STM32-P103
STM32-H107
STM32-P107
STM32-H407
STM32-P207

The package is not often updated and it might be a good idea to build own environment (with the latest versions of the Open-Source tools used in Olimex ODS) once you get the idea!

Unfortunately, Olimex is unable to provide any support for the Olimex ODS (we can't give you any custom configurations, neither makefiles, neither additional examples). Olimex ODS it is meant to be used only as a reference in your efforts to configure own environment.

Download links and more information might be found here:

<https://www.olimex.com/Products/ARM/JTAG/resources/OpenOCD/>

3.11 Other software tools

ARM-USB-OCD-H would work any IDE or programming tool which supports OpenOCD FT2232 devices.

CHAPTER 4: FREQUENTLY ASKED QUESTIONS

Q: What USB cable do I need?

A: You should have a USB type A-B cable to connect to PC, all PC USB hosts have USB-A connector while ARM-USB-OCD has USB-B connector so the cable should be USB A-to-B type. Note that such a cable is not included in the package.

Q: Does your JTAG connector layout differ from the JTAG connector layout of other debuggers?

A: No. It is the standard 20-pin ARM JTAG layout.

Q: What are the LEDs for?

A: The LED is mainly meant to indicate programming/debugging in progress. The red/green LED should blink when you have an on-going operation (read, write).

Q: I have downloaded the latest version of OpenOCD but there is no configuration for my target. Send me one please.

A: We commit or forward everything we have done directly to the OpenOCD repositories. If you can't find a suitable cfg there – you are out of luck. You either have write it yourself or ask politely somebody at the OpenOCD community to do it for you.

Q: I can't write proper makefile for my board under your Eclipse-like IDE. Can you please write it for me?

A: No. That's the bad (good?) side of open software – it is a community effort – everybody has to write and commit something. You learn something in the end, however.

Q: I have LPC1227 board and can't program it with your OpenOCD debugger. What do I do wrong?

A: LPC1227 lacks JTAG according to the microcontroller's datasheet. The board can be programmed only via SWD (Serial Wire Debug) interface. Olimex OpenOCD debuggers have JTAG by default. You would need an additional adapter – ARM-JTAG-SWD.

Q: Howdy, guys. I can't program my MSP430 and PIC16 boards with your robust debugger. I need help ASAP.

A: Technically, it is possible to program targets different than ARM using our OpenOCD debugger. Practically, almost all users use the debugger for ARM programming and only ARM targets are officially supported. There is a reason that the prefix in the name of the debugger is 'ARM-'.

CHAPTER 5: REVISION HISTORY AND SUPPORT

5. Introduction to the chapter

In this chapter you will find the current and the previous version of the document you are reading. Also the web-page for your device is listed. Be sure to check it after a purchase for the latest available updates and examples.

5.1 Document revision

Table 5. Document revision history

Revision	Changes	Modified Page#
A, 01.09.14	Initial release	All
B, 04.02.15	A lot of updates regarding the support of the ARM-JTAG-SWD in OpenOCD 0.9.0 Fixed the description of the power jack Improved the description of the additional female-female plug cable	13, 14, 18, 20
C, 10.04.15	Added information on how to run multiple debuggers in the same computers Added information on how to change the VID and the PID of the device	23,24 25
D, 15.07.15	Improved the information about the Crossworks installation	26, 27
E, 08.10.20	Fixed some info about MacOS installation, Improved Crossworks instructions, Added info about STM32CubeIDE	19, 20, 26, 28
F, 1.11.23	Added info about USB type C connector and ARM-USB-OCD-HL	All

5.2 Useful web links and purchase codes

A place for general questions, FAQ or friendly talk check our forums: <https://www.olimex.com/forum/>

A lot of documents, old work, examples and know-how documentation might be found at the [product](#) pages for each product.

Web addresses:

ARM-USB-OCD-H – <https://www.olimex.com/Products/ARM/JTAG/ARM-USB-OCD-H/>

ARM-USB-OCD – <https://www.olimex.com/Products/ARM/JTAG/ARM-USB-OCD/>

ARM-USB-TINY-H – <https://www.olimex.com/Products/ARM/JTAG/ARM-USB-TINY-H/>

ARM-USB-TINY – <https://www.olimex.com/Products/ARM/JTAG/ARM-USB-TINY/>

ARM-JTAG-20-10 – <https://www.olimex.com/Products/ARM/JTAG/ARM-JTAG-20-10/>

ARM-JTAG-SWD – <https://www.olimex.com/Products/ARM/JTAG/ARM-JTAG-SWD/>

USB-A-C-CABLE – <https://www.olimex.com/Products/Components/Cables/USB-CABLE-A-TO-C-1M/>

USB-A-B-CABLE – <https://www.olimex.com/Products/Components/Cables/USB-A-B-CABLE/>

How to purchase?

You can purchase directly from our web shop or from any of our distributors. List of distributors: <https://www.olimex.com/Distributors>.

Please visit <https://www.olimex.com/> for more info.

5.3 Product support

For product support, hardware information and error reports mail to: support@olimex.com. Note that we are primarily a hardware company and our software support is limited.

Please consider reading the paragraph below about the warranty of Olimex products.

Warranty and returns:

Our boards have lifetime warranty against manufacturing defects and components.

During development work it is not unlikely that you can burn your programmer or development board. This is normal, we also do development work and we have damaged A LOT of programmers and boards during our daily job so we know how it works. If our board/programmer has worked fine then stopped, please check if you didn't apply over voltage by mistake, or shorted something in your target board where the programmer was connected etc. Sometimes boards might get damaged by ESD shock voltage or if you spill coffee on them during your work when they are powered.

Please note that warranty do not cover problems caused by improper use, shorts, over-voltages, ESD shock etc.

If the board has warranty label it should be not broken. Broken labels void the warranty, same applies for boards modified by the customer, for instance soldering additional components or removing components - such boards will be not be a subject of our warranty.

If you are positive that the problem is due to manufacturing defect or component you can return the board back to us for inspection.

When we receive the board we will check and if the problem is caused due to our fault and we will repair/replace the faulty hardware free of charge, otherwise we can quote price of the repair.

Note that all shipping back and forth have to be covered by the customer. Before you ship anything back you need to ask for RMA. When you ship back please attach to it your shipping address, phone, e-mail, RMA# and brief description of the problem. All boards should be sent back in antistatic package and well packed to prevent damages during the transport.